

MOORING BUOYS / FENDERS STERN AND BOW GUARDS

Bowbuoy

Rugged PVC bowbuoy with three reinforced eyelets.

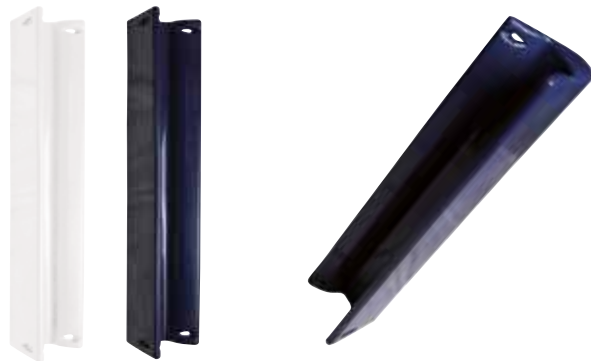
Cod.	Ref	ø mm	L mm	Colour	UM	€
3800302	BB1	80	350+350	WHITE	PCS	
3800303	BB1	80	350+350	BLUE	PCS	
3800304	BB2	110	500+500	WHITE	PCS	
3800305	BB2	110	500+500	BLUE	PCS	



Bow Fender

Bow guard protection fender for sailboats when anchor is weighed or when bow berthing occurs. Sturdy PVC body for optimal shock absorption (it doesn't deflate, does not contain air). Four line eyelets for a safe bow fix.

Cod.	Length cm	Width cm	Colour	UM	€
3803026	60	15	WHITE	PCS	
3803027	60	15	BLUE	PCS	



PVM1 Bow Guard

Transom/bow guardfender for sailing boats and catamarans, great protection when weighing the anchor or for bow and stern berthing. Sturdy Polyurethane mass for optimal shock absorption (it doesn't deflate, does not contain air). Two line eyelets for a safe bow fix.

Cod.	Length cm	Width cm	H cm	UM	€
3803030	60	25	17	PCS	



Classic 60 Stern Guard

Fender designed for sailing boats transom protection. Matches perfectly any stern type from 60° to 75°. Sturdy and soft Polyurethane mass for optimal shock absorption (it doesn't deflate, does not contain air). The special shape and the line hole ensures great holding on any boat.

Cod.	Length cm	Width cm	H cm	Colour	UM	€
3803006	60	32	25	WHITE	PCS	
3803007	60	32	25	BLUE	PCS	



Match 80 Stern Guard

Fender designed for sailing boats transom protection. Matches perfectly any stern type from 75° to 90°. Sturdy and soft Polyurethane mass for optimal shock absorption (it doesn't deflate, does not contain air). The special shape and the line hole ensures great holding on any boat.

Cod.	Length cm	Width cm	H cm	Colour	UM	€
3803008	66	28	24	WHITE	PCS	
3803009	66	28	24	BLUE	PCS	



Stainless Steel Bow Plate

Easy to mount light and resistant Stainless Steel plate bow guard. Can be easily moulded by hand due to the splits cut.

Cod.	Type Ref	Width cm	H cm	UM	€
3800310	Elliptical	26,5	34,5	PCS	
3800311	Triangular	35	34,5	PCS	
3800312	U-Bolt Hole	27	32	PCS	

