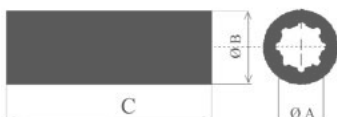


**Shaft bearing**

bronze/rubber hydro lubricated. Special type. Metric internal and external  $\varnothing$  in inches



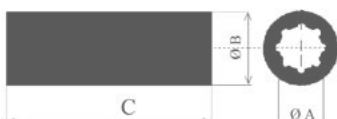
Article	$\varnothing$ A mm.	$\varnothing$ B mm.	C mm.
2732125	25	40	100
2732130	30	45	120
2732135	35	50	139
2732140	40	55	160
2732145	45	65	180
2732150	50	70	200
2732155	55	75	220
2732160	60	80	240
2732165	65	85	260
2732170	70	90	280
2732175	75	95	300
2732180	80	100	320
2732185	85	105	340
2732190	90	110	360

**Shaft bearing**

bronze/rubber hydro lubricated. Euro type. Metric internal and external  $\varnothing$  in inches



Article	$\varnothing$ A mm.	$\varnothing$ B mm.	C mm.
2732225	25	35	100
2732230	30	40	120
2732235	35	48	139
2732240	40	56	160
2732245	45	61	180
2732250	50	66	200
2732255	55	73	220
2732260	60	78	240
2732265	65	83	260
2732270	70	90	280
2732275	75	96	300
2732280	80	102	320
2732285	85	110	340
2732290	90	115	360

**Shaft bearing**

bronze/rubber hydro lubricated. English type. Metric internal and external  $\varnothing$  in inches



Article	$\varnothing$ A		$\varnothing$ B		C mm.
	inch.	mm.	inch.	mm.	
2732330	1"	25,40	1 1/2"	38,10	100
2732331	2"	50,80	2 5/8"	66,67	200
2732332	2 1/4"	57,16	3"	76,20	220
2732333	2 1/2"	63,50	3 1/4"	82,55	250
2732334	2 5/8"	66,67	3 3/8"	85,72	260
2732335	2 3/4"	69,85	3 3/4"	95,25	280
2732336	3"	76,20	4"	101,60	305

