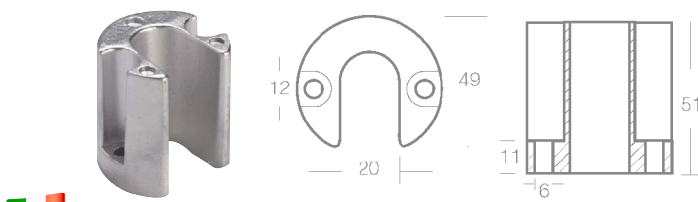


Collar

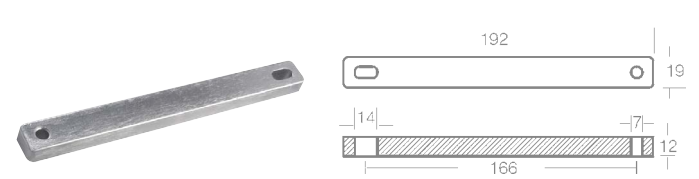
Mercuriser BRAVO I-II-III (or. ref. 806190Q1)



2626320 Zinc anode
2626320A Aluminium anode

Plate

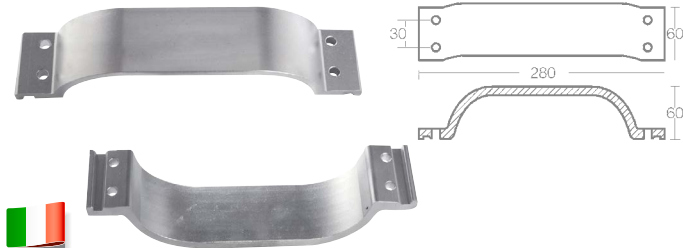
in zinc Mercury/Mariner 30/40HP (or. ref. 825271)



2626321 Plate

Plate

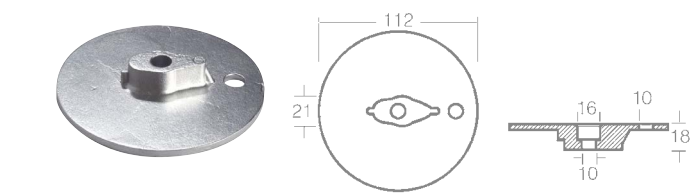
in zinc Mercury/Mariner 150-175-200-250-275-V4HP (rif. or. 89949)



2626322 Plate anode

Plate

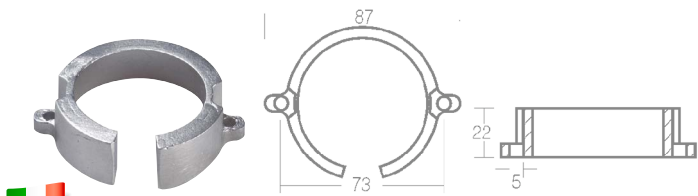
in zinc Mercury/Mercuriser VERADO, BRAVO (or.ref.76214T1)



2626323 Plate anode

Collar

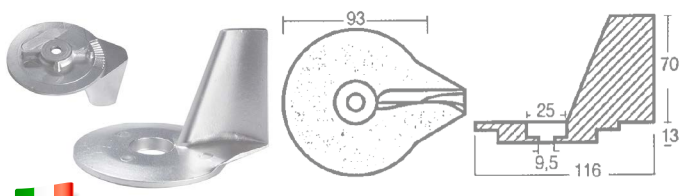
BRAVO ONE e BRAVO III (or. ref. 806188A1)



2626324 Zinc anode
2626324A Aluminium anode

Fin

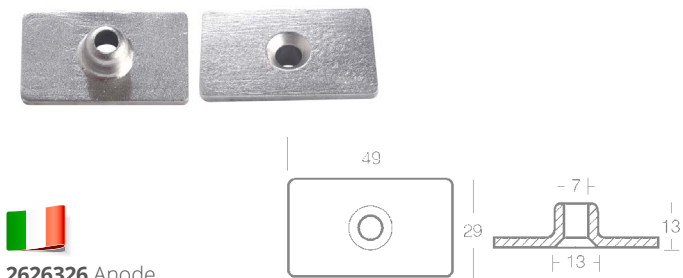
Mercury 25-50 HP (or. ref. 822157)



2626325 Zinc anode
2626325A Aluminium anode

Small plate

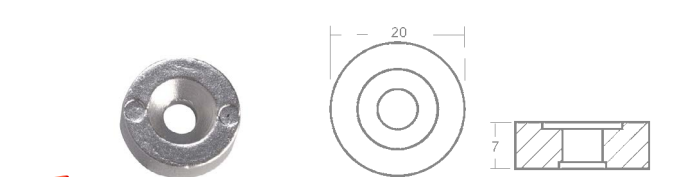
Mercury/Mariner 4,5-9,9 up to 1987 (Or. Ref. 85824)



2626326 Anode

Ring

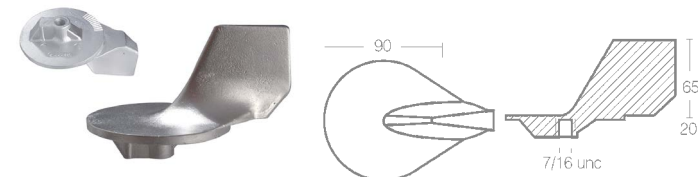
Mercury 4-5-6 HP 4T (rif. or. 823912-1)



2626327 Zinc anode
2626327A Aluminium anode

Fin

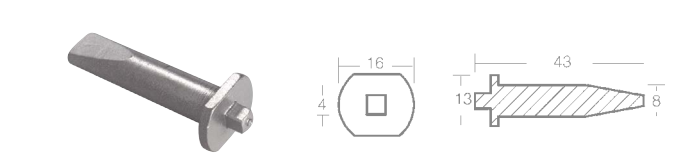
in zinc Mercury da 35 HP a V6 e MCM (rif. or. 822777Q1-822777A1-46399A1)



2626328 Fin

Small bar

(or. ref. 826887M)



2626329 Small bar