

Gangway

Aluminium. No-slip floor, complete with handrail.



Article	Length cm.	Width cm.	Weight Kg	Model
3030523	200	36	13	Fixed model
3030536	250	36	15	Fixed model
3030522	200	36	14	Folding model
3030529	250	36	16,5	Folding model

Gangway

Aluminium, marine grade wood floor, complete with handrail.

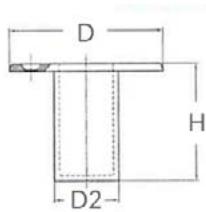


Article	Length cm.	Width cm.	Weight Kg	Model
3030520	200	36	14	Fixed model
3030535	250	36	16	Fixed model
3030521	200	36	16	Folding model
3030527	250	36	21	Folding model

ACCESSORIES

Bushing for gangway

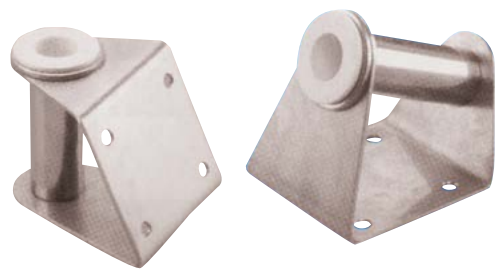
Hole Ø mm. 25.



Article	Material	H mm.	D mm.	D2 mm
3030551	Chromed brass	77	72	31
3030553	AISI 316 s.s.	50		31

Support

Stainless steel bracket with nylon bushing hole Ø mm. 25, for mounting the gangway over the tilted stern, both positive and negative, of sailboats.



3030554S Support

Balance gear

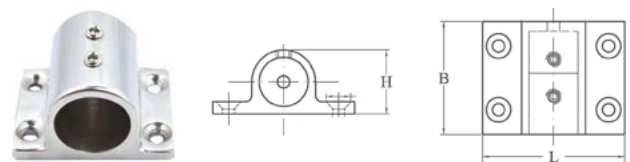
for gangway, in stainless steel Ø 10,8 mm., length 450 mm., height 120 mm.



3030552 Balance gear

Side bushing

for gangway stanchions in AISI 316 stainless steel.



Article	Tube ø mm.	L mm.	B mm.	H mm.
3030562	22	58	46	29,5
3030565	25	61,5	46	33